

Global

EVERYTHING TO KEEP
YOUR **CARWASH BUSINESS**
ROLLING!

**INVENTORY ON HAND
OF MOST STANDARD PARTS.
CUSTOM PARTS ORDER AVAILABLE.**

**FIND ALL THE PRODUCTS YOU ARE LOOKING FOR
WITH OUR ONLINE CATALOG**

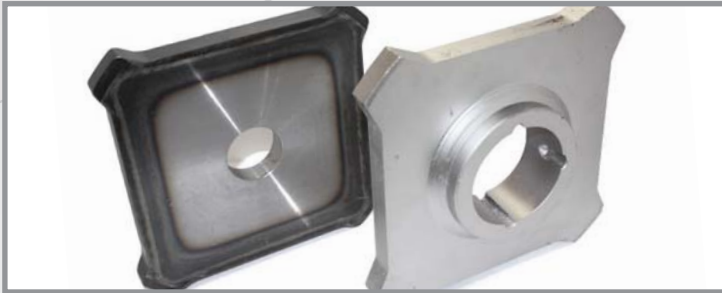
GLOBALCHAINS.CA



- Carrier link for X458 chain



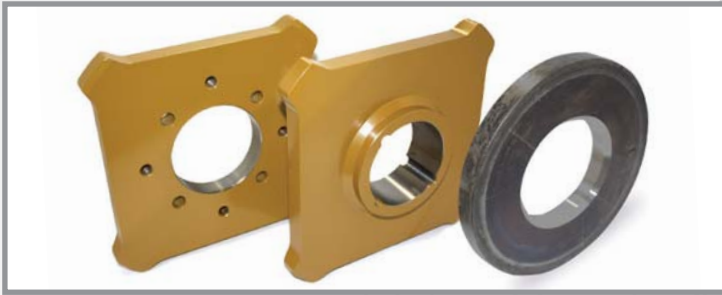
- Long link log chain 5/8" black oxide 3-1/2" pitch
- Steel hardened teeth sprocket for log chain



- Steel hardened teeth sprocket for X458 chain



- Welded steel chain # SC-78 riveted X 16 pitches section
- Welded steel chain # SC-78 cottered X 16 pitches section
- Steel carrier link for SC-78 chain



- Painted sprocket for X458 chain
- Steel ring



- Drop forged rivetless chain # X348 or X458 X 10 Ft. section
- Drop forged rivetless chain # X348ZP or X458ZP zinc plated X 10 Ft. section



- Steel pintle chain # D88K riveted X 10 Ft. section



- Cast combination chain # C-188 riveted X 10 Ft. section
- Cast combination chain # C-188 cottered X 10 Ft. section
- Steel hardened teeth sprocket for C-188 chain



- Steel roller conveyor chain # 81X riveted X 10 Ft. section
- Steel carrier link for 81X chain



- Steel pintle chain # D88K riveted X 10 Ft. section
- Steel pintle chain # D88K riveted X 16 pitches or 34 pitches section with tear drop lock pin at each end
- Steel pintle chain # D88KZP zinc plated riveted X 16 pitches or 34 pitches section with tear drop lock pin at each end
- Steel pintle chain # D88K cotteder X 16 pitches or 34 pitches section with tear drop lock pin
- Steel pintle chain # D88KZP zinc plated cotteder X 16 pitches or 34 pitches section with tear drop lock pin
- Steel carrier link for D88K chain with tear drop hole & pin



- Steel hardened teeth sprocket for SC-78 chain
- Steel hardened teeth sprocket for D88K chain

QUALITY AND PERFORMANCE TAILORED TO YOUR NEEDS!



Global Chains

3755 Place Java, Suite 170
Brossard, Quebec J4Y 0E4

www.globalchains.ca

T 450.619.6660

F 450.619.7770